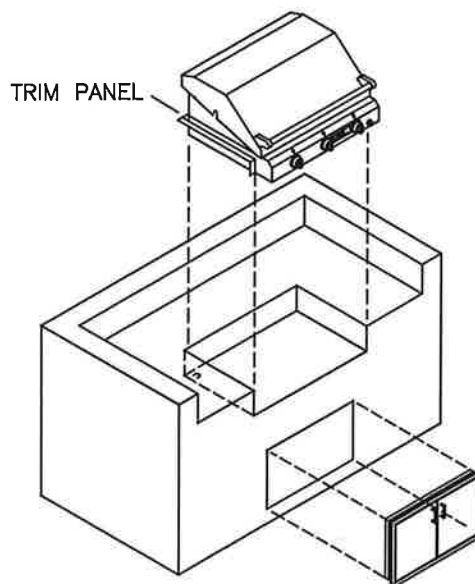
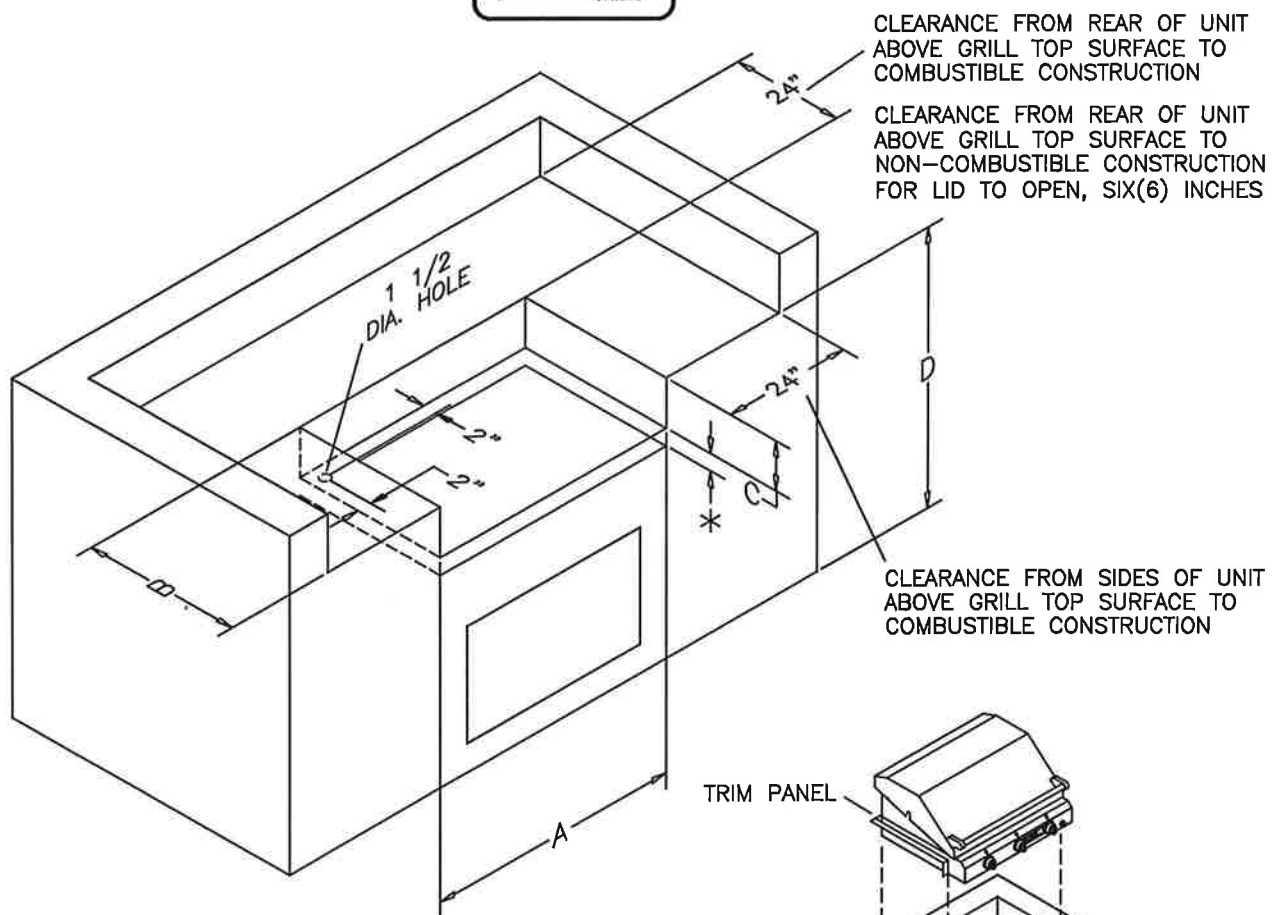


# STERLING II, STERLING III & STERLING IV FR BUILD-IN SPECIFICATIONS

## Appendix A: Build-in Specifications (For Sterling FR)

(Sterling III FR shown)



DESCRIPTION OF MEASUREMENT	STERLING II-FR	STERLING III-FR	STERLING IV-FR
A HORIZONTAL WIDTH OF OPENING	25 3/4"(65.5 CM)	35 1/4"(89.5 CM)	44 3/4"(113.7 CM)
B HORIZONTAL DEPTH OF OPENING	22 1/16"(56.1 CM)	22 1/16"(56.1 CM)	22 1/16"(56.1 CM)
C* VERTICAL DEPTH OF OPENING	6"(15.2 CM)	6"(15.2 CM)	6"(15.2 CM)
D SUGGESTED HEIGHT OF COUNTERTOP	34 1/4"(87.0 CM)	34 1/4"(87.0 CM)	34 1/4"(87.0 CM)

\* ADD 2" IF INSTALLED WITH COMBUSTABLE MATERIAL UNDER GRILL

Combustible or distortable surfaces: wood, wood composites, vinyl, canvas, thatch, plastic, paint, drywall, etc.  
Noncombustible surfaces: concrete, cement board, tile, stone, mortar, brick, stucco, and metal.

Minimum clearance from sides and back of unit to combustible construction below top of unit: 0" from sides and 0" from back.

Minimum clearance from sides and back of unit to vertical combustible construction extending above top of unit: 24" from sides and 24" from back.

DO NOT USE THIS GAS APPLIANCE UNDER OVERHEAD COMBUSTIBLE CONSTRUCTION.

5" WIDE AREA UNDER FACE PANEL MUST REMAIN UNOBSTRUCTED FOR VENTILATION.

